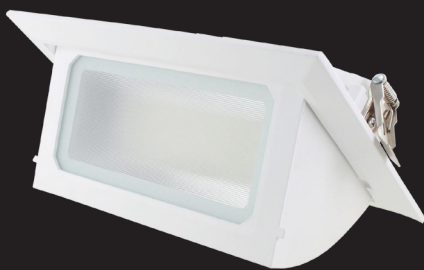


LED Rectangular Wallwasher Shoplight Installation Instructions Page One



For model: SLRT30W-40

This installation must be carried out by an electrician.

Please read these instructions carefully before installation.

Leave a copy for the user/maintenance engineer for future reference.

Specification

- Wallwasher LED Rectangular Shoplight
- 110-265V
- 30W
- 60pcs of 5730 SMD Epistar LED
- 4000K Colour temperature
- 2500 Lumen output
- 50,000 Hours life expectancy
- Dimensions: L: 240 x W: 157 x D: 92mm
Cut out: 230 x 127mm

Description

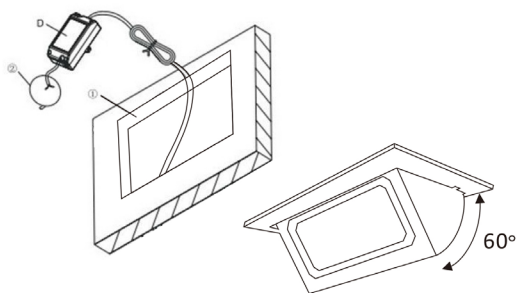
The LED Rectangular Wallwasher Shoplight is an energy-efficient LED recessed ceiling fixture that is perfectly suited for mounting in system / hollow ceilings. The fixture provides a pleasant light array with a beam angle of 120°. The fixture comes complete with standard driver (included). It is mounted by using spring clamp connection.

Package Contents

- One x 30W Fitting
- One x Driver with open cable end
- One x Installation Instructions

Safety Instructions

- Unplug mains before installing or wiring the fixture.
- Never look directly into the light source.
- User must follow the safety instructions and warning clauses written in these instructions.



1. Prepare the required ceiling cut-out.
2. Connect the LED Driver to the mains power. Connect the fitting to the driver.
3. Push spring upwards.
4. Place the fitting into the ceiling cut-out.

Warning

Please note electrical products can cause death or injury, or damage to property. This product should be installed by a qualified licensed electrician.

- Ensure the mains supply is switched off before commencing work.
- Before cutting, ensure that the hole does not impinge on joists, pipe work, cables or other building services.

LED Rectangular Wallwasher Shoplight Installation Instructions Page Two



For model: SLRT30W-40

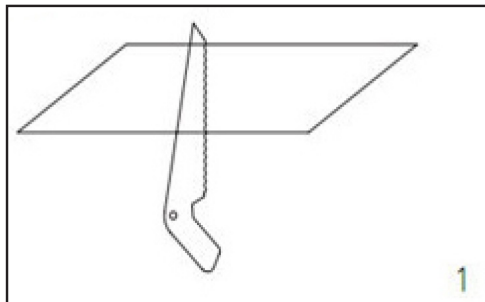


Fig.1. Ceiling Opening L: 225 x W: 127mm.

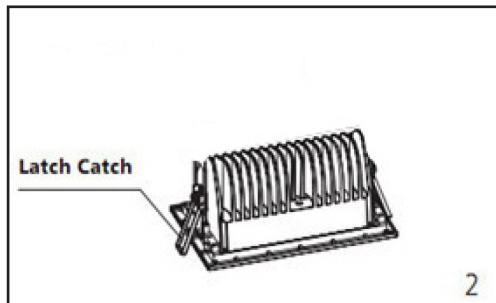


Fig.2. Connection Power.

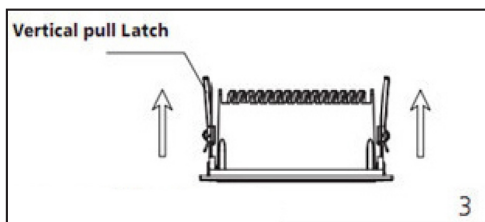


Fig.3. Fasten the latch on to the ceiling.

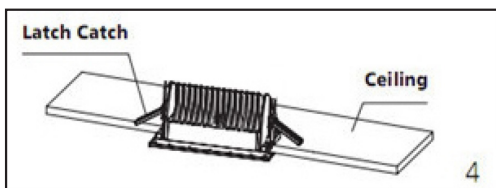


Fig.4. Finished installation.

Guarantee

This product is guaranteed for a period of three years from the date of purchase. The guarantee is invalid in the case of improper use, tampering, removal of the Q.C. date label, installation in an improper working environment or installation not according to the current edition of the I.E.E. Wiring Regulations (BS7671). The guarantee is also invalidated if the luminaire has been Mega tested. Should this product fail during the guarantee period it will be replaced free of charge, subject to correct installation and return of the faulty unit. We do not accept responsibility for any installation costs associated with the replacement of this product. Your statutory rights are not affected. We reserve the right to alter specifications without prior notice.



RoHS



CE